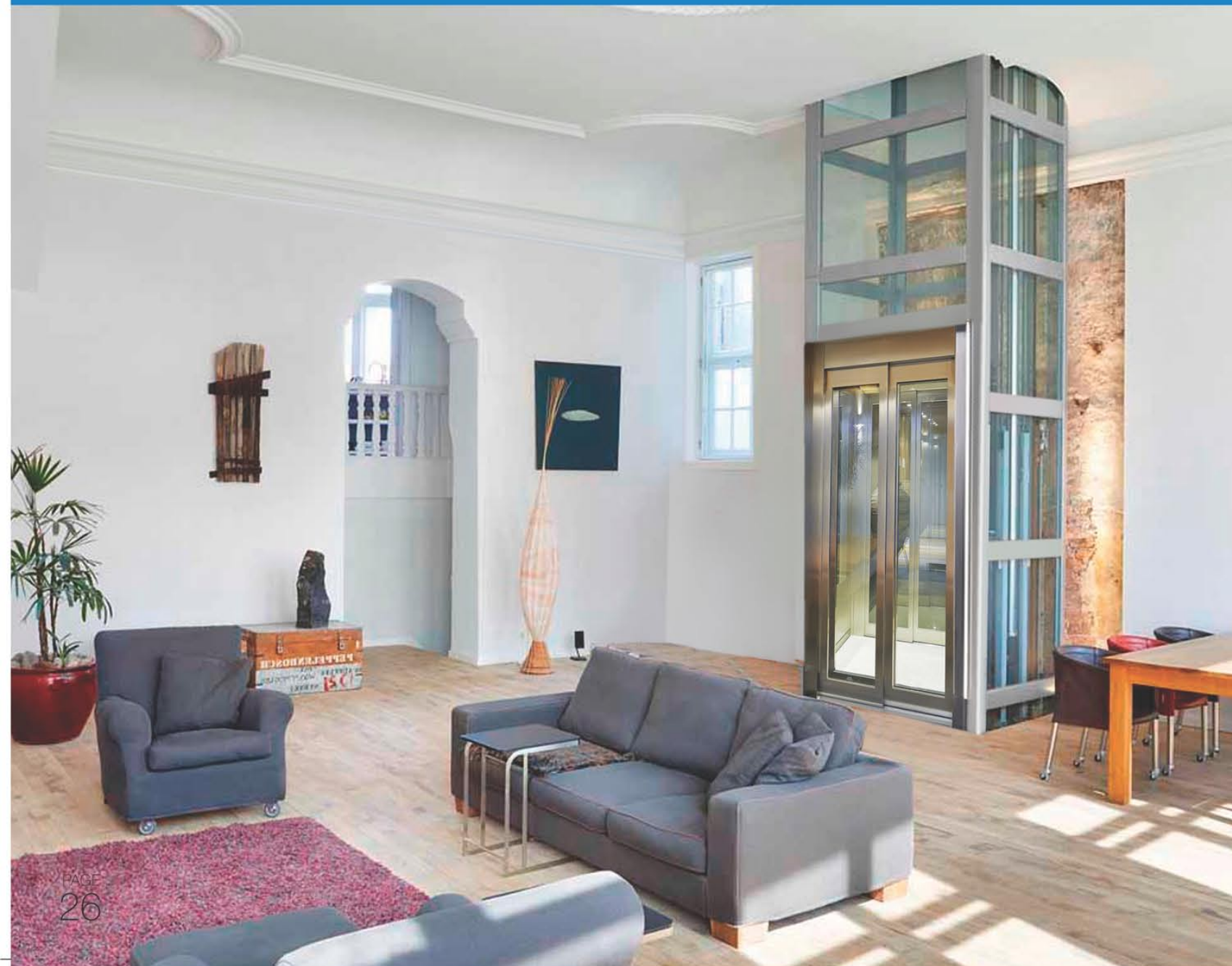


Home Elevator

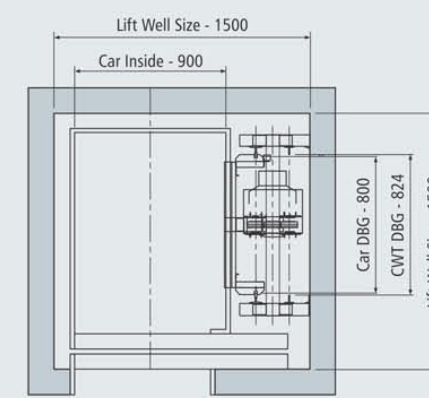
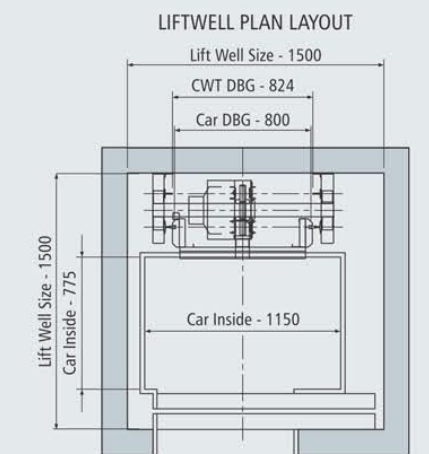
Home elevators not only increase the value of your home, but can also provide you stunning showpiece. At the same time, home lifts can allow the disabled and elderly to easily move about a multi-level dwelling.

The term "home elevator" commonly refers to a lift enclosed in a shaft, and which can travel vertically as much as 15 m. (50 ft.). Home elevators make it easier to carry groceries, laundry or anything else from one floor to another. And today, they're fully customizable - choose from a wide range of materials, such as marble walls or stained glass, to turn your home elevator into an expression of your own unique style!

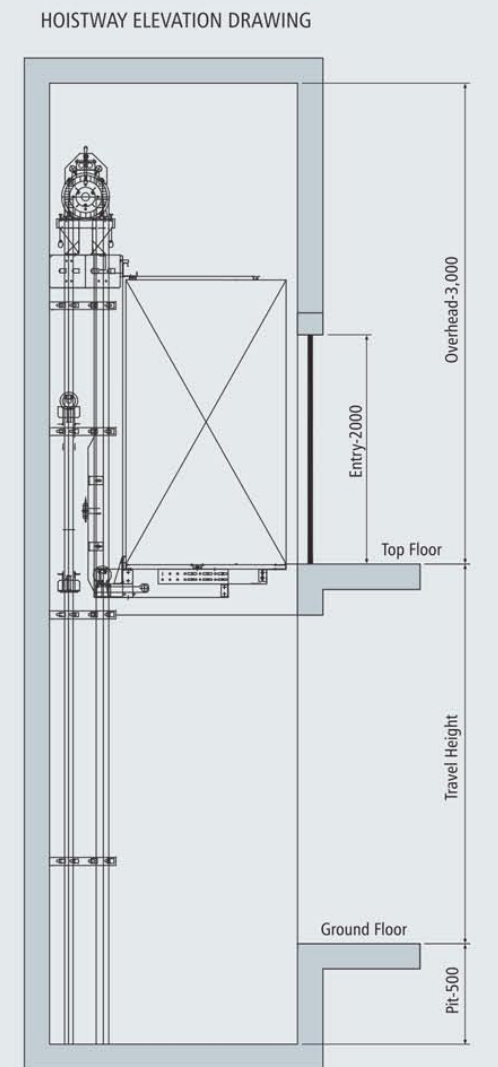
- ▶ Our home elevators are driven by a Permanent Magnet Gearless Machine. Only available until recently on high-end commercial elevators, this technology delivers extremely smooth, noiseless motion. No need to worry about being disturbed by the noise of the elevator in your living space!
- ▶ Multiple safety components (such as low-speed shaft braking and electrical dynamic braking) act either separately or combined, to provide the highest level of safety in the industry.
- ▶ Our home elevators are featured Machine Room-Less (MRL) design. They take up no additional space other than the hoist way.
- ▶ Our home elevators need no space overhead.
- ▶ Home elevator designs range from the most basic, unfinished open platform, to a fully enclosed cabin with safety gates and an interior finish constructed of hardwood, ceramic tile, marble or granite. The enclosed design uses standard interior doors, to blend in seamlessly with your home's décor.
- ▶ Your home elevator comes fully equipped with automatic controls and safety features like an emergency stop button, in-cab alarm, and a telephone jack that accommodates a standard household phone.



Mini Gearless Machine



- Save Energy
- Low Noise
- Comfortable



RPM	120	Pulley Dia.	100 mm
Frequency	12 Hz.	Rope Dia.	4 mm
Voltage	230 VAC	No. of Ropes	4
Kw / Hp	0.75 / 1	Lifting Capacity	300 kg
Weight	70 kg.	Lift Speed	up to 0.50 m/s
Brake	Pick-up : 220 VDC	Max. Travel	15 Mts.
Voltage	Holding : 110 VDC	Starts / Day	100